

COMPLEX BOTTLE GEOMETRY - SKULL BOTTLE

The customer's production team faced the challenge of applying a cork to a bottle with a neck angled 23 degrees. The neck had to be perpendicular for proper cork insertion to ensure a secure seal and adequate shelf life. The bottle resembled a human skull, adding the complexity of the project.

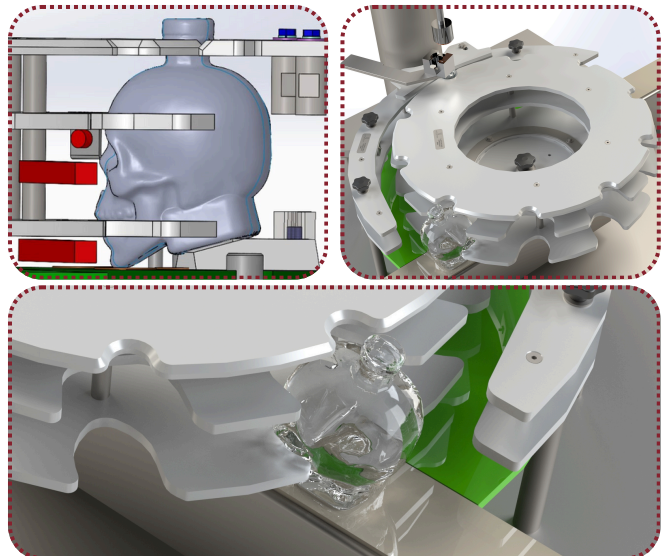
Customer at a Glance

The Customer is a packager of award-winning alcohols and spirits in Eastern Canada. The marketing of the container is highly dependent upon the unique container skull profile and the production runs are small in volume however occur frequently. The Customer needs quick change overs and rapid production ramp up times for small, short production runs.

Septimatech Solution

Septimatech developed a star and guide with an integrated ramp to tilt the bottle.

- The ramp aligns the bottle neck to be perpendicular for cork application.
- After corking, the container base is returned to a horizontal position as it exits the corking area.
- The star, guide, and ramp were engineered to handle variations in glass tolerances and the bottle's obscure profile.



Results

The Customer was able to effectively and efficiently package this complex container with Septimatech Change Parts, without having to modify an existing machine, purchase new equipment, or rely on manual labor to apply the corks.

Existing Machine Life Cycle Extended
Capital Expenses Avoided