

## **CRASHES DUE TO DOWNED BOTTLES**

*The Customer is experiencing excessive down time and maintenance costs as a result of crashes on their filling machine due to fallen containers entering the machine at speeds of 275 CPM. The family of 3 containers they are packaging, are unstable as the container is tall and slender with a small container base.*

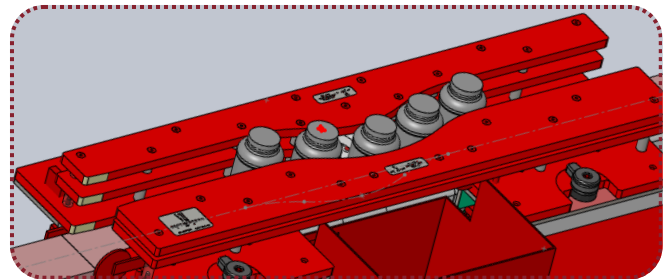
### **Customer at a Glance**

The Customer is a large multi-national manufacturer of consumer beverage and food products which has been unsuccessful at finding a solution which wouldn't require them to purchase a new piece of equipment. They were looking for a solution which would be minimal maintenance and quick change over between package sizes, without substantial capital expense.

### **Septimatech Solution**

Septimatech engineered a mechanical/gravity system for efficient container rejection

- Upright containers passed through smoothly, while fallen containers were diverted to a recycling bin at 275 CPM.
- The system allowed quick changeovers to different bottle sizes within minutes.
- No setup was required for production after changeovers.



### **Results**

The Customer eliminated line stoppage resulting from filler stoppage with fallen containers, resulting in increased line operating efficiency. As well, they realized shortened production ramp up time with no tools or set up required by line operators for completing a change over.

**Line Downtime Eliminated**  
**Change Over Time Decreased**